

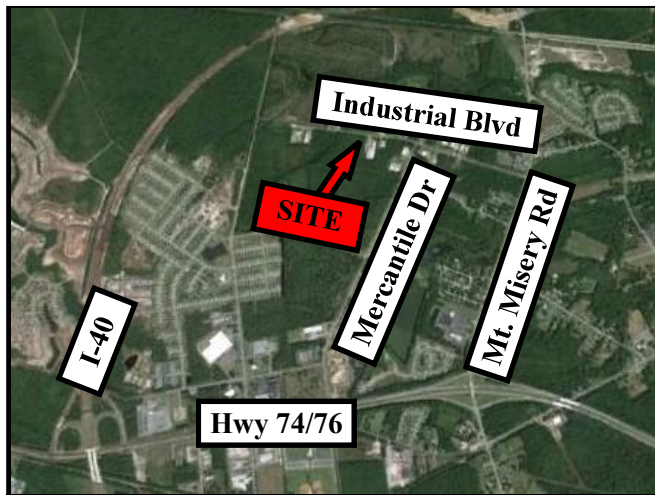


15894 HIGHWAY 17
P.O. BOX 56
HAMPSTEAD, NC 28443
910/270-5100 FAX: 910/270-5110

359 NORTH FRONT STREET
P.O. BOX 215
WILMINGTON, NC 28402
910/251-2211 FAX: 910/251-2218

FOR SALE

LELAND INDUSTRIAL LOT



**9133 INDUSTRIAL BOULEVARD NE
LELAND, NORTH CAROLINA**

- 2.73 Acres
- 238' Frontage x 500' Depth
- Zoned Industrial (I-G) By Brunswick County
- Municipal Water And Sewer
- Brunswick County Map Book 104, Page 10; Lot BR-2
- Leland Industrial Park Subject To Covenants And Restrictions

THE OFFERING

\$215,000

CALL
LAURENCE NADEAU
(910) 515-3622

CALL
HENRY NADEAU
(910) 524-7184



Commercial & Investment Real Estate Specialists

email: info@creativecommercial.biz
www.creativecommercial.biz

